

# Regional Priority Plan for The Inner Coast Region

Healthy Forests, Thriving Watersheds, Resilient Communities

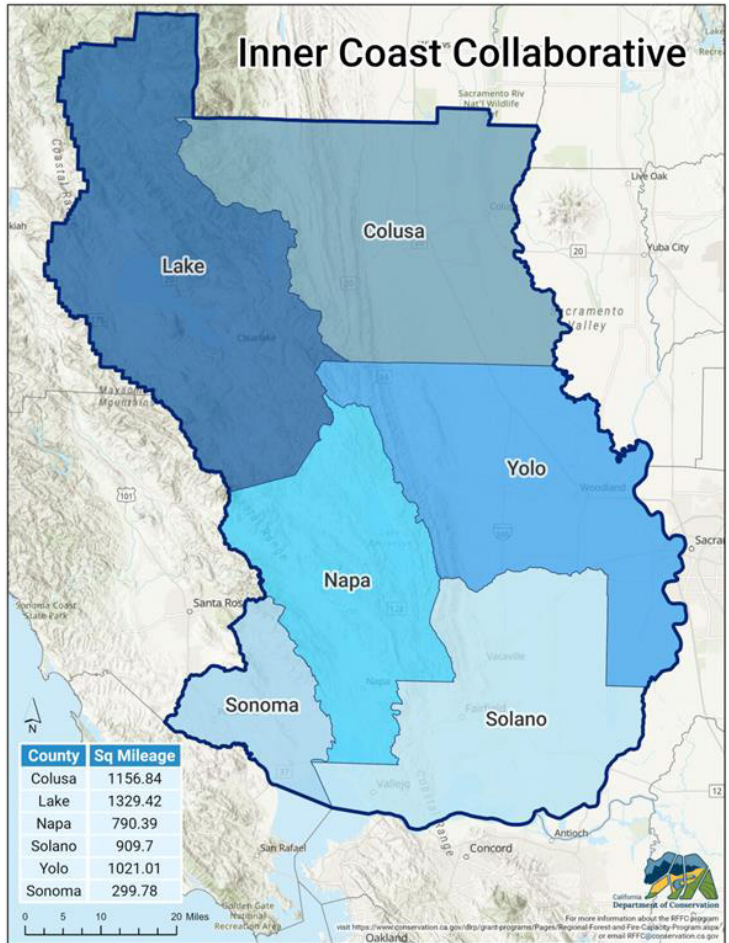
## OVERVIEW

The Inner Coast (Collaborative) is a partnership focused on improving forest health and fire resilience across the 5,500 square miles of the Inner Coast Region (Colusa, Lake, Napa, Solano, Sonoma, and Yolo counties). Through regional coordination and cooperation, the Collaborative is striving to create healthier forests, ecosystems, and communities.

The Collaborative is represented by lead partners from each county in the region, including: Colusa, Napa, Solano, Sonoma and Yolo Resource Conservation Districts and Clear Lake Environmental Research Center.

To guide this work, the Collaborative is creating a Regional Priority (Plan) that will:

- Develop a **shared vision** for the region, grounded in current conditions and local knowledge
- Include a **list of priority projects** based on partner and community input
- Identify **resources** needed to implement projects



Prescribed burn at Pacific Union College in Napa County, with support from the Napa, Solano and Yolo Prescribed Burn Associations

## INNER COAST COLLABORATIVE PARTNERS

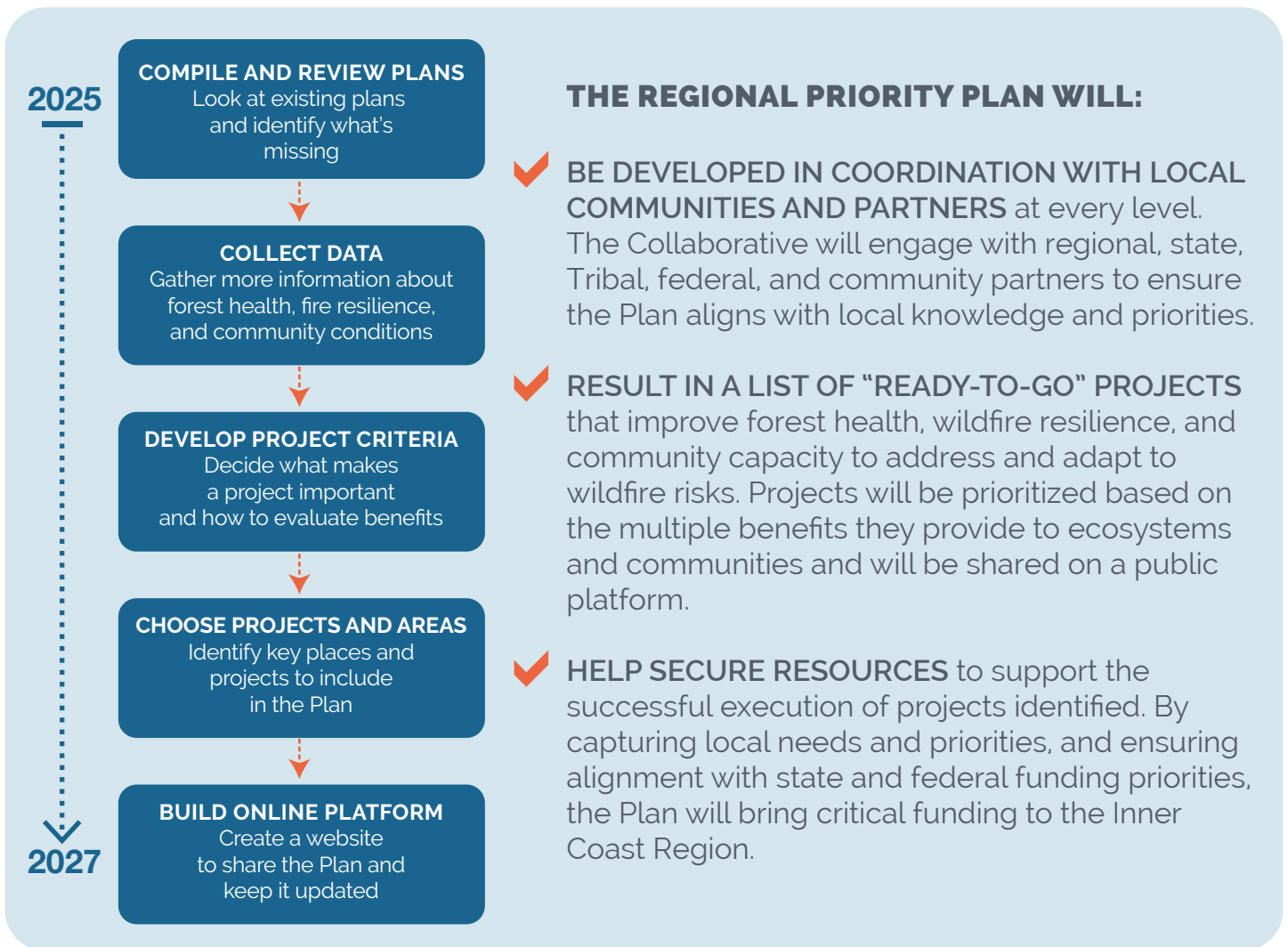


COLUSA COUNTY



RESOURCE Conservation District





**HOW TO GET INVOLVED**

Partner and community input is essential to shaping forest health and wildfire resilience strategies. We want to ensure the Plan reflects local values and that resources are directed where they are most needed.

To learn more about the Collaborative and find your local partner, visit: [www.naparcd.org/forest-health/icc](http://www.naparcd.org/forest-health/icc)

To receive updates on the Plan, sign up here: <https://bit.ly/ICCUpdates>

*The Regional Priority Plan is funded by the California Department of Conservation Regional Forest and Fire Capacity Program block grant.*

